



ATX AUSTRALIA'S PREMIUM ALL-TERRAIN AIR/COIL

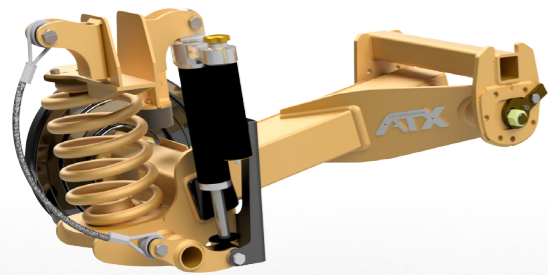
The engineering department went all out on this one, opting for all the best bits including off-road race specification monotube dampers, bigger VC bearings and a 63mm stub axle! All of this on the Cruisemaster™ single arm platform, results in the biggest baddest Cruisemaster™ suspension ever made.

The long travel Cruisemaster™ ATX suspension comes in either Coil or Air spring configuration that can be changed at any time with a simple adaptor system. The combination of either a King Spring or VC designed Air Spring paired with in-house developed monotube dampers allows the intrepid explorer to really travel *without limits*. Not only is the Cruisemaster™ ATX a rugged suspension but it also provides unparalleled ride and handling characteristics.

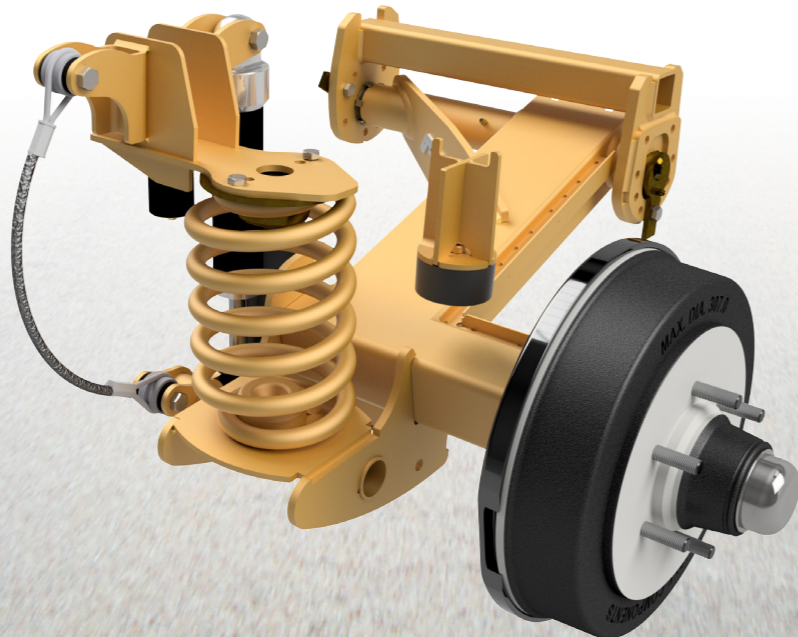
With Cruisemaster™ ATX you will have the confidence that your suspension will not only get you there but also get you back, even if 'there' is not on the map!

FEATURES

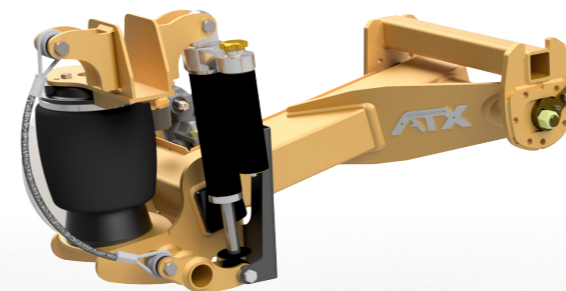
- Long travel (140mm) single arm design
- 215mm ride height
- Drum or ventilated disc brake options
- 63mm stub axle with large VC bearings
- Standard rebound cable
- Interchangeable King Spring coil or custom Firestone air spring options
- 46mm piggyback monotube dampers
- Premium multi-stage powdercoating
- Locking camber and toe adjustment
- Simple self-aligning mounting system
- Powdercoated as standard
- RAT proven



COIL SINGLE AXLE (ATM)
2200kgs - 2600kgs - 2800kgs



COIL TANDEM AXLE (ATM)
3700kgs - 4500kgs



AIR SINGLE AXLE (ATM)
2200kgs - 2800kgs



AIR TANDEM AXLE (ATM)
3700kgs - 4500kgs