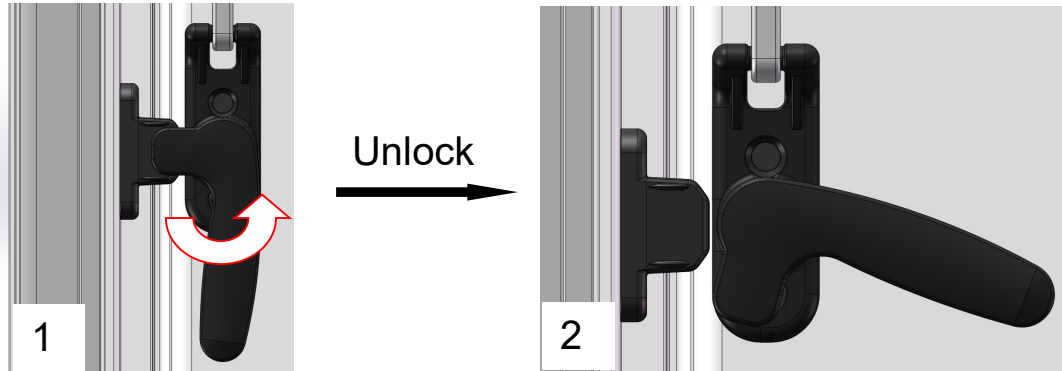


## ATS4+EVBF2 Window Operation Instructions

### ● Open Window Instructions

**Step1:** Rotate handle to unlock as Diagram 1 & 2.



**Step2:** Push acrylic panel outwards. Panel will click at different positions of opening. 300mm high windows have two opening positions, other windows have three. (Diagram 3)

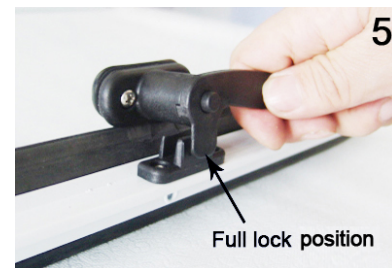


### ● Close Window Instructions

**Step1:** Push acrylic panel outwards a little to release from lock position, then pull inwards to the full lock position, as diagram. (Diagram 4 & 5)

**Step2:** Rotate handle to lock the window. Handle will click once in the lock position.

**NB:** All windows are equipped with semi-lock position, providing ventilation and preventing wind damage while parked (Diagram 6). Windows must be fully closed, and all handles must be in full lock positions when travelling.



# AUSSIE TRAVELLER PTY LTD

Incorporated in Queensland A.C.N. 010 809 168 A.B.N. 81 010 809 168

## ● EVBF2 screen frame features

The screen frame pleats have the effect of protecting the privacy of the privacy of the fabric, which is protected by ultraviolet radiation and light shielding.

The pleated yarn at the screen frame has a ventilation and mosquito proof characteristic.

The EVBF2 screen frame does not affect the access when the installed Windows can be used as emergency exits.

Can replace with EVBF screen frame, EVBF1 screen frame.

## ● Instructions for use of EVBF2 gauze frame:

1, through draw yarn tie rod or pole, the lock touch us. When you lock it, you can take a pull or a push rod, and you can adjust the window space ratio of the pleats or the hundreds of pleats. When the two pull rods are locked, they can stay at any position in the range of activity. (as shown in diagram 1, diagram 2 and diagram 3)

2. When unlocking, press the lock plate on one side of the gauze screen and pull the yarn pull rod to unlock the screen. (as shown in diagram 4)

3. After unlocking, the yarn and cloth pull rod are separated. The yarn pull rod and cloth pull rod can stay at any position within the range of activity.

Matters needing attention:

1. When driving, it is necessary to make sure that the screen frame is fully open to prevent the yarn and cloth pull rod from shaking in the process of driving. (as shown in diagram 5)

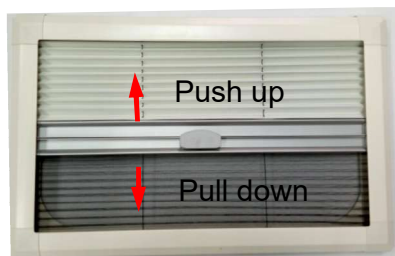


Diagram 1



Diagram2 (Pleated drape)



Diagram 3 (Gauze screen)



Diagram 4

Lock plate

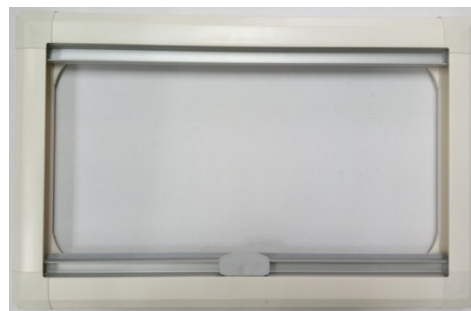


Diagram 5 (Fully open)

### HEAD OFFICE AND FACTORY:

PO Box 126 Clontarf Beach QLD 4019  
11-15 Oasis Court, Clontarf  
Phone: 07 32843284 Fax: 07 32845969  
E-mail: [enquiries@aussietraveller.com.au](mailto:enquiries@aussietraveller.com.au)

### MELBOURNE SHOW ROOM

PO Box 563 Somerton Vic 3062  
235A Barry Road, Campbellfield, Vic, 3061  
Phone: 03 9357 6565 Fax: 03 9357 6515  
E-mail: [info@aussietraveller.com.au](mailto:info@aussietraveller.com.au)

# AUSSIE TRAVELLER PTY LTD

Incorporated in Queensland A.C.N. 010 809 168 A.B.N. 81 010 809 168

## Problems and procedures:

1. Problem: after using for a period of time, the sliding of the cloth and gauze curtains may not stay at any position.

Processing method :(as shown in diagram 6)

Adjust the length of the drawstring: refer to the installation instructions and remove the EVBF2 screen frame. Turn over to the back, find the pull rope at the position of the inserted Angle. If the cloth curtain slides, adjust the side of the gauze curtain to pull the rope end. If gauze curtain slides, adjust the pull rope end of side of cloth curtain.

Adjustment method:

Use the cross screwdriver to twist the self-tapping screw, adjust the length of the rope and tighten the self-tapping screw.

Note: both ends of the tie bar should be adjusted. The adjustment length should be as consistent as possible to ensure that the tie bar is parallel to the outer frame and prevent deflection of the tie bar.

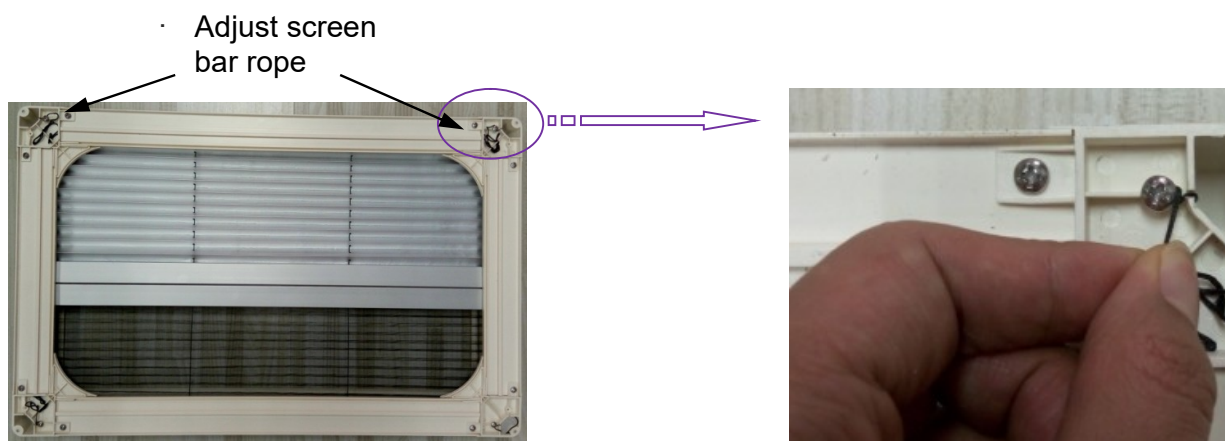


Diagram 6

## HEAD OFFICE AND FACTORY:

PO Box 126 Clontarf Beach QLD 4019  
11-15 Oasis Court, Clontarf  
Phone: 07 32843284 Fax: 07 32845969  
E-mail : enquiries@aussietraveller.com.au

## MELBOURNE SHOW ROOM

PO Box 563 Somerton Vic 3062  
235A Barry Road, Campbellfield, Vic, 3061  
Phone: 03 9357 6565 Fax: 03 9357 6515  
E-mail: info@aussietraveller.com.au