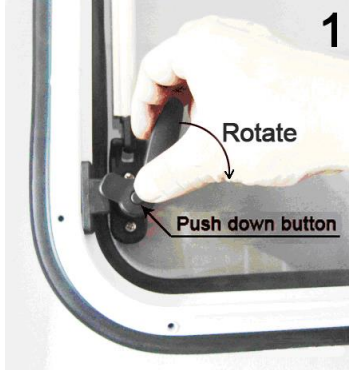


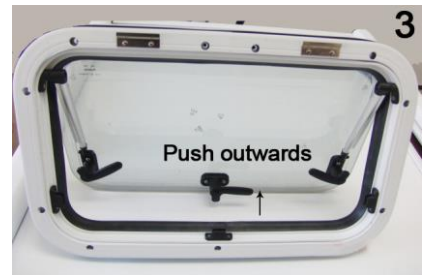
EuroVision Window Operation Instructions

● Open Window Instructions

Step1: Push button on the handle and rotate handle to unlock as per Diagram 1 & 2.

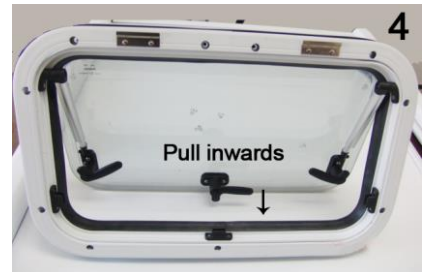


Step2: Push acrylic panel outwards. Panel will click at different positions of opening. 300mm high windows have two opening positions, other windows have three. (Diagram 3)

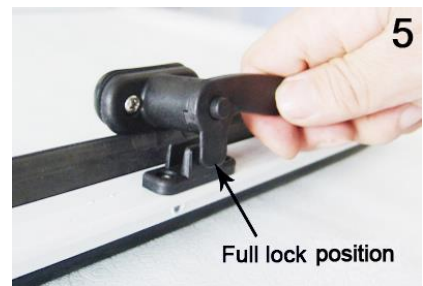


● Close Window Instructions

Step1: Push acrylic panel outwards a little to release from lock position, then pull inwards to the full lock position, as per diagram. (Diagram 4 & 5)



Step2: Rotate handle to lock the window. Handle will click once in the lock position.



NB: All windows are equipped with semi-lock position, providing ventilation and preventing wind damage while parked (Diagram 6). Windows must be fully closed, and all handles must be in full lock positions when travelling.



BRISBANE

11-15 Oasis Court, Clontarf, QLD 4019
Phone : 07 3284 3284 Fax : 07 3284 5969
E-mail : enquiries@aussietraveller.com.au

www.aussietraveller.com.au

MELBOURNE

235A Barry Road, Campbellfield VIC 3061
Ph: 03 9357 6565 Fx: 03 9357 6515
E-mail: info@aussietraveller.com.au

● Blind and screen information

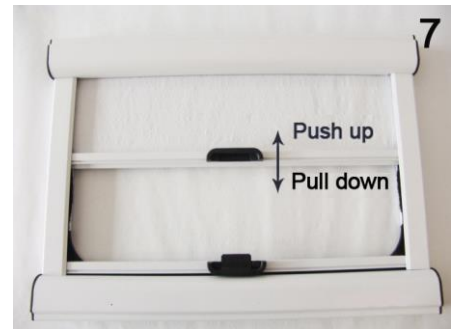
Features:

This specially designed panel has three functions:

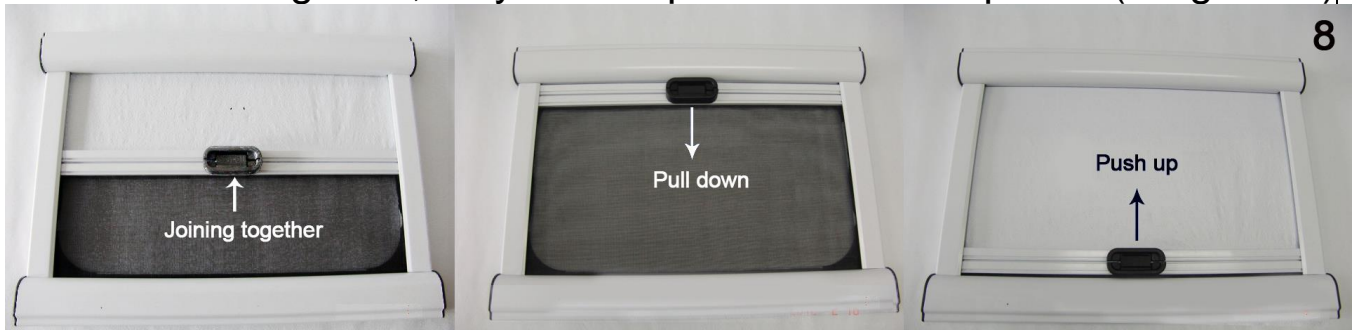
1. The blind prevents light entry and provides privacy.
2. Screen delivers protection from bugs.
3. It can act as emergency exit, when the screen and blind are unlocked and window open.

Instructions:

Use the central handle, to pull or push the blind downwards or upwards to any position. (Diagram 7)



The blind and screen can be locked together by joining at middle catch. Once locked together, they can be positioned as required. (Diagram 8)



To unlock, press down on the catch in the handle. (Diagram 9)

