



# AIR CONTROL SYSTEM

## MANUAL

MANUAL AIR CONTROL

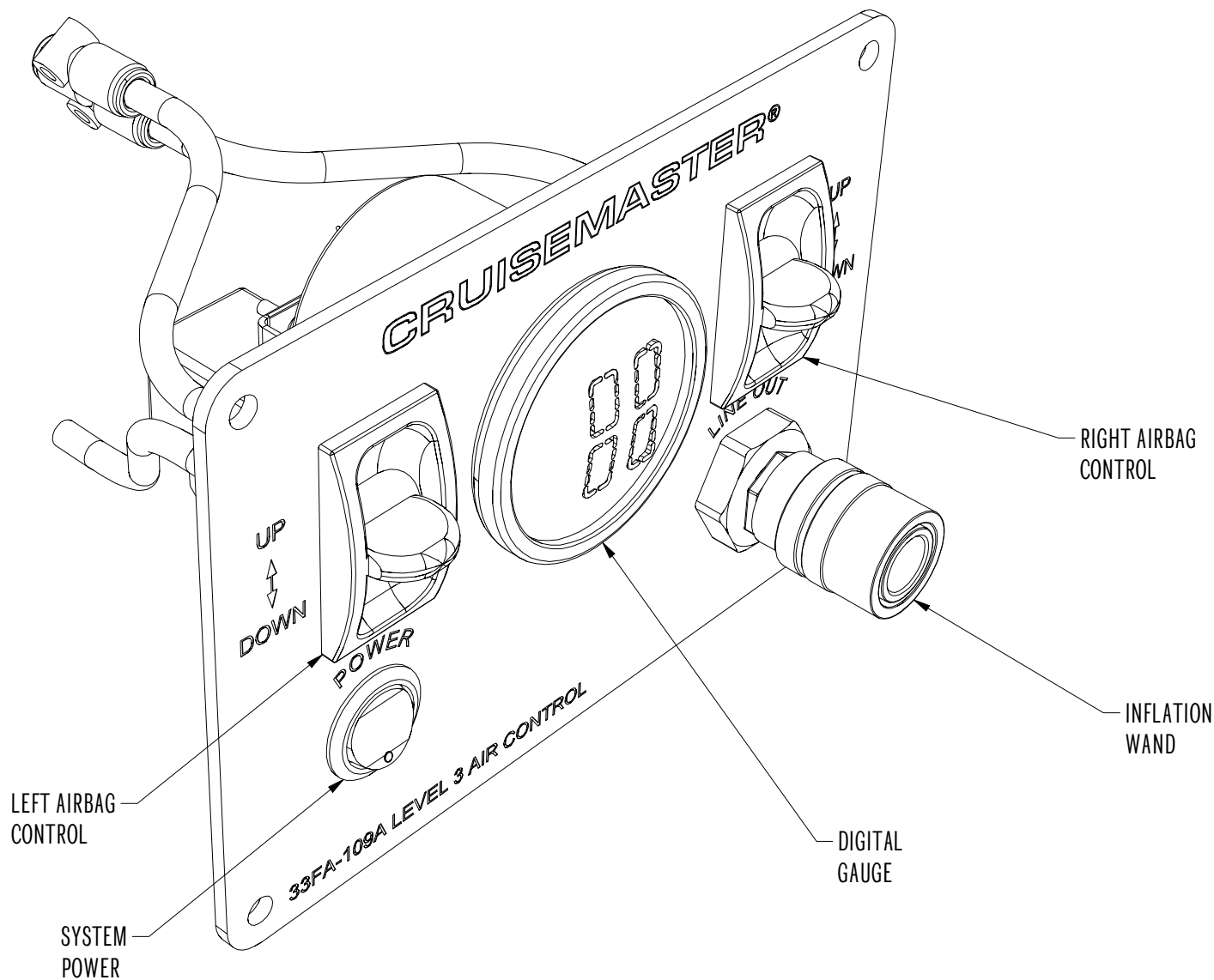
DIGITAL GAUGE

TYRE INFLATION PORT

200 PSI COMPRESSOR

11L TANK

DESIGNED TO BE USED WITH	
CM XT	CM ATX
33SA-AIRKIT-1AS	33SA-AIRKIT-1BS
33SA-AIRKIT-1AT	33SA-AITKIT-1BT



### L3 MANUAL CONTROL PANEL PART LIST

ITEM	QTY	PART NUMBER	DESCRIPTION
1	1	AC7200D	DUAL DIGITAL GAUGE WITH ABM LOGO
2	1	B2518	33FA-109A LEVEL 3 AIR CONTROL PANEL
3	0.45	EF3BR	3MM ELECTRICAL CABLE - BROWN
4	0.35	EF3W	3MM ELECTRICAL CABLE - WHITE
5	0.57	EF5B	5MM ELECTRICAL CABLE - BLACK
6	0.82	EF6R	6MM ELECTRICAL CABLE - RED
7	1	EFR40	40 AMP RELAY - 12 VOLT, 4 PIN
8	3	EFSFPR	FEMALE SPADE TERMINAL - 2.5 TO 3MM RED (6.3MM WIDTH)
9	3	EFSFPR48	FEMALE SPADE TERMINAL - 3MM RED (4.8MM WIDTH)
10	3	EFSPFY	FEMALE SPADE TERMINAL - 5 TO 6MM YELLOW (6.3MM WIDTH)
11	1	ES1200	ROCKER SWITCH - 12V WITH LED OFF-ON
12	2	FAC7100	PNEUMATIC PADDLE SWITCH BARBED
13	1	FAC7305	COMPRESSOR TEE FITTING 1/4 NPT
14	1	FAC7401	QUICK RELEASE COUPLING - AC7401A
15	1	FAC7405	110/150 PSI PRESSURE SWITCH 1/8 NPT
16	5	FN1104-200	NYLON TUBE 1/4 200MM - BLACK
17	3	FN1104-75	NYLON TUBE 1/4 75MM - BLACK
18	1	FAC7420	BULKHEAD CONNECTOR 1/4 X 1/4 NPT
19	4	FQF1503P	Y PIECE 1/4 PTC - SMC
20	1	FQF305	STRAIGHT FITTING 1/4 PTC X 1/4 - CAMOZZI
21	1	YABM12	3KG PLAIN CARTON - BROWN 240X240X200

### L3 MANUAL CONTROL PANEL

TITLE

33FA-109A

PART NUMBER

MATERIAL:

FINISH:

ALL DIMENSIONS IN MILLIMETERS UNLESS OTHERWISE STATED

DO NOT SCALE  
SUPPLIER CODE:

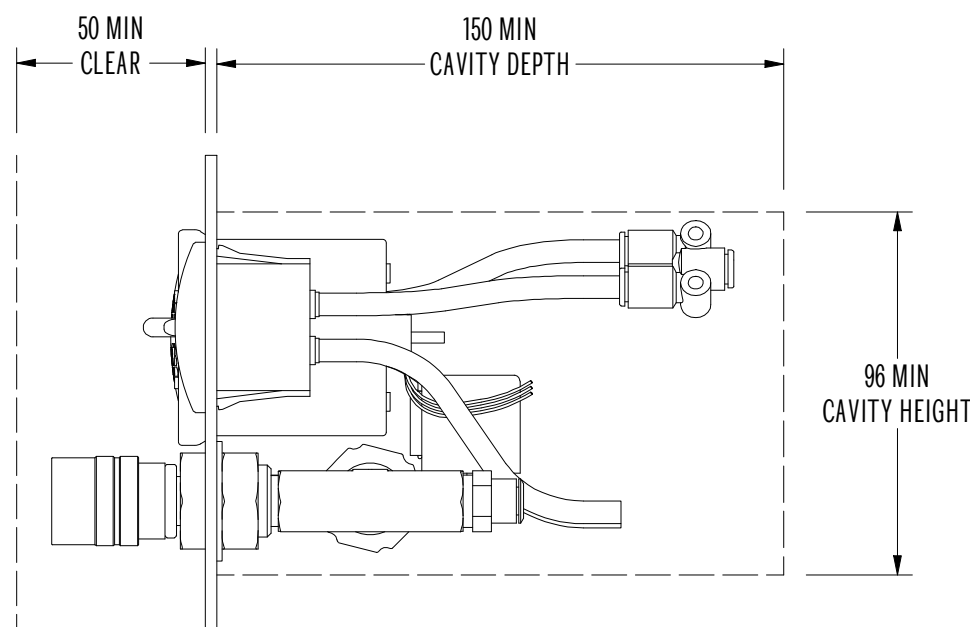
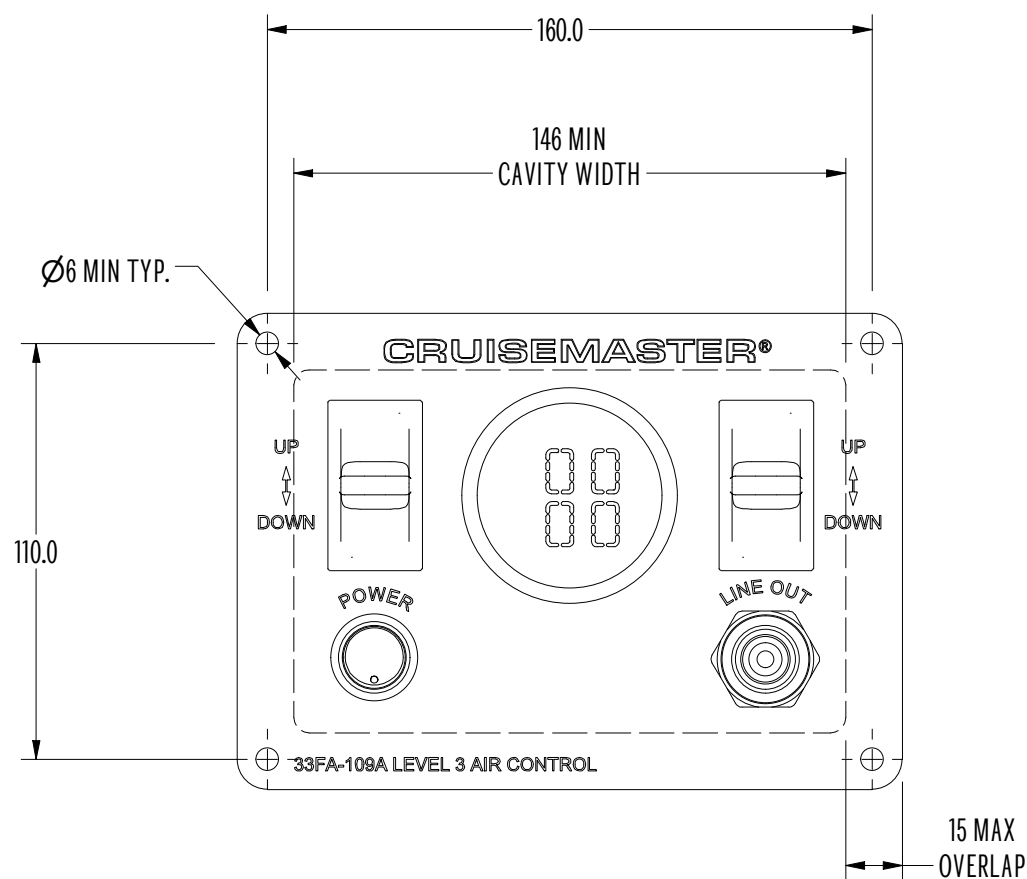
MASS: 0.539 kg  
VOLUME: 298270.4 mm<sup>3</sup>

PAGE: 1 of 3  
SHEET SIZE: A3

DRAWN: AB  
CHECKED: AB  
APPROVED: AB  
DATE: 29/11/2018

UNLESS OTHERWISE STATED
DIM TOL
0 ± 0.5
0.0 ± 0.2
0.00 ± 0.05
MACHINED 3.2
GEN SHORE HARDNESS TOL ± 3
REMOVE SHARP EDGES

REV	DESCRIPTION	ECN	NAME	DATE
3	Steel air tank swapped to aluminium	1803	JT	21/01/2020
2	Added control system part list, added 10m roll air line	1556	AJ	18/01/17
1	Release for production	1497	AJ	9/07/16



## GENERAL INSTRUCTIONS

- It is recommended that only a properly qualified person installs the product and carries out maintenance. If you are not qualified and attempt to carry out such work ensure that all safety equipment is used and safety standards are met.
- Ensure that you have read the full Product Manual before attempting to fit the product.
- Ensure the Product Manual is kept with the vehicle and that any vehicle owner and/or operator are fully advised on the system and its operation before attempting to operate it.
- DO NOT connect any electrical components to the vehicle without preparing the electrical system as per the vehicle manufacturer's instructions. Connecting without preparing the vehicle could lead to component failure, vehicle damage or fire.
- If you use a sharp utility knife or razor blade great care must be taken in all cases not to cut yourself during this operation.
- The gauge is NOT weatherproof and is best mounted inside the vehicle.
- The switches should be mounted in a protected area to minimise the effect of moisture and dirt E.g. in or under a tray, in tool box or canopy.
- Air compressors get hot - avoid any flammable liquid or burn risk areas.
- The air tank is rated to a maximum working pressure of 150 psi (10 bar) and this is never to be exceeded.
- Incorrect use of this product can result in damage to the components associated parts and/or the vehicle, which is not covered under warranty.
- Ensure suspension airbags are maintained at the stated ride height at all times and maintain the minimum pressure required and never exceed the maximum, as required by the particular airbag product.



FOLLOW LINE LABELING TO CONNECT THE AIR LINES AND ELECTRICAL WIRING CORRECTLY

### L3 MANUAL CONTROL PANEL

33FA-109A

TITLE

PART NUMBER

MATERIAL:

FINISH:

ALL DIMENSIONS IN MILLIMETERS UNLESS OTHERWISE STATED

DO NOT SCALE

SUPPLIER CODE:

MASS: 0.539 kg

VOLUME: 298270.4 mm<sup>3</sup>

PAGE: 2 of 3

SHEET SIZE: A3

DRAWN: AB

CHECKED: AB

APPROVED: AB

DATE: 29/11/2018

UNLESS OTHERWISE STATED

DIM	TOL
0	± 0.5
0.0	± 0.2
0.00	± 0.05
MACHINED	3.2/

0 ± 0.5

0.0 ± 0.2

0.00 ± 0.05

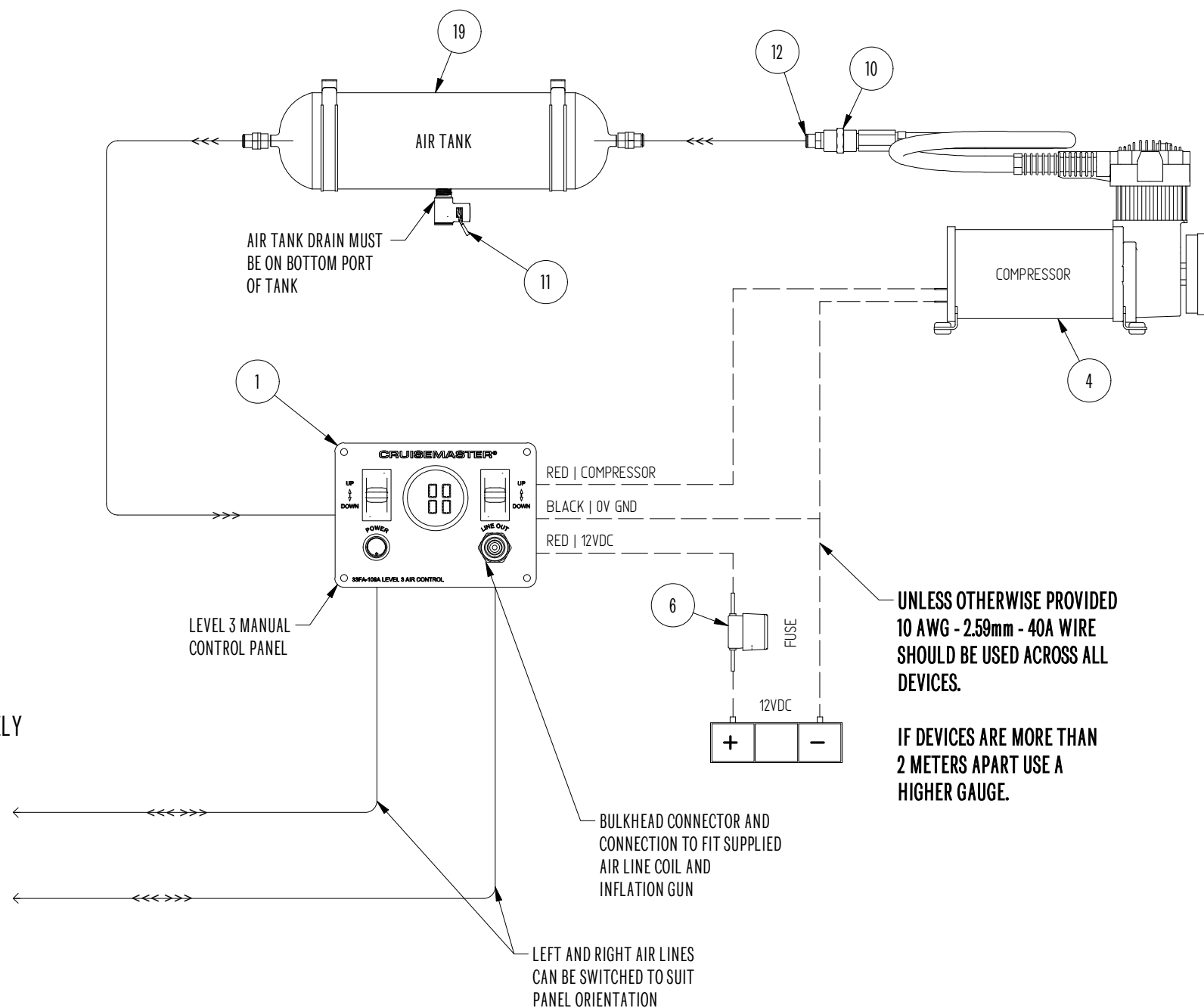
MACHINED 3.2/

GEN SHORE HARDNESS TOL ± 3

REMOVE SHARP EDGES



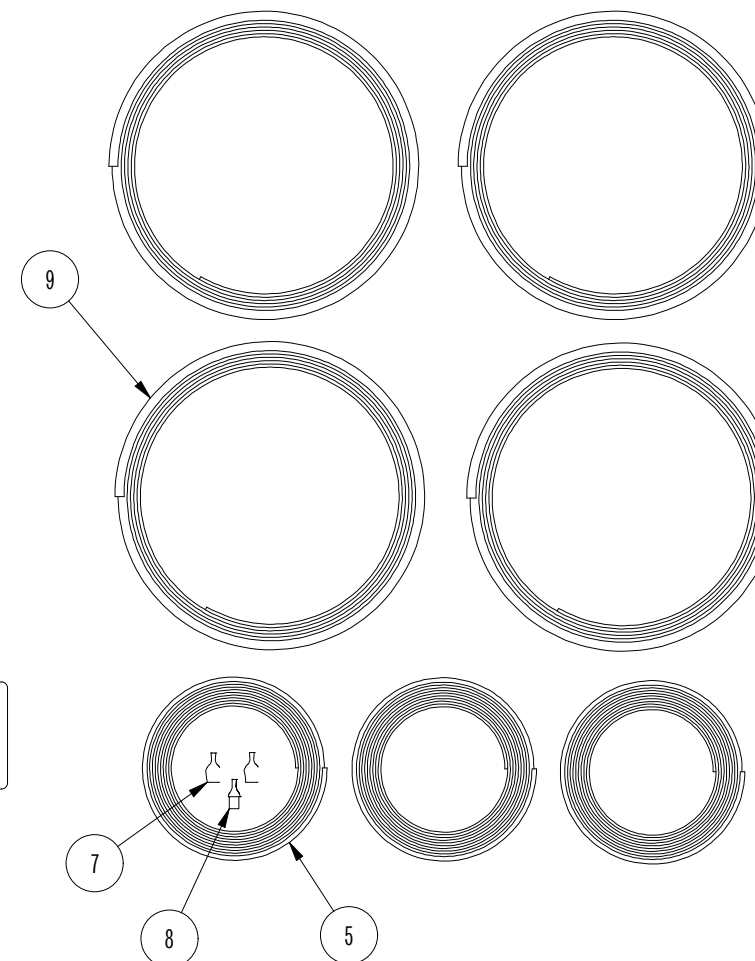
# CIRCUIT DIAGRAM



**AIRBAGS**  
LEVEL 1 FITTINGS KIT AND AIRBAGS SPECIFIED SEPARATELY

## LEVEL 1 KITS

- TYPE A SINGLE (33SA-AIR-KIT-1AS)
- TYPE A TANDEM (33SA-AIR-KIT-1AT)
- TYPE B SINGLE (33SA-AIR-KIT-1BS)
- TYPE B TANDEM (33SA-AIR-KIT-1BT)



ITEM	QTY	PART NUMBER	DESCRIPTION
1	1	PKVCL3PANEL	PKVCL3ACK PANEL ASSEMBLY ONLY
2	1	AC7401A	AIRBAG MAN INFLATION COIL & WAND
3	1	AC7401ACA	INFLATION COIL ASSEMBLY ONLY - 22'
4	1	AC8110	12V AIRBAG MAN COMPRESSOR
5	3	EF3BR	3MM ELECTRICAL CABLE - BROWN
6	1	EFHW40	FUSE HOLDER WITH 40A FUSE
7	2	EFSPFR	FEMALE SPADE TERMINAL - 2.5 TO 3MM
8	1	EFSPMY	MALE SPADE CONNECTOR - YELLOW
9	4	FN1104-10	NYLON TUBE 1/4" 10M - BLACK
10	1	FN2602	HEX SOCKET 1/4" NPT FEMALE
11	1	FDV1425	DRAIN VALVE WITH LEVER - 1/4"
12	3	FQF305	STRAIGHT FITTING 1/4" PTC X 1/4"
13	4	FX1040B102	3/8 UNC HEX BOLT X 1" GR5
14	4	FX1040N201	3/8 UNC NYLON NUT
15	4	FX104XW102	3/8 FLAT WASHER 7/8 OD
16	1	WCOMP	COMPONENT LIST
17	1	YABM3	LARGE ABM CARTON - BROWN
18	1	ZBAGPLAIN	PLAIN POLY BAG
19	1	AC9013	ALUMINIUM AIR TANK 3G-11L

## L3 MANUAL CONTROL PANEL

33FA-109A

PART NUMBER

MATERIAL:

FINISH:

ALL DIMENSIONS IN MILLIMETERS UNLESS OTHERWISE STATED

DO NOT SCALE  
SUPPLIER CODE:

MASS: N/A  
VOLUME: N/A

PAGE: 3 of 3  
SHEET SIZE: A3

DRAWN: AB  
CHECKED: AB  
APPROVED: AB  
DATE: 29/11/2018

TITLE

UNLESS OTHERWISE STATED	DIM	TOL
	0	± 0.5
	0.0	± 0.2
	0.00	± 0.05
	MACHINED	3.2

GEN SHORE HARDNESS TOL ± 3  
REMOVE SHARP EDGES

