



# AIR CONTROL SYSTEM

AUTO

MANUAL AIR CONTROL

DIGITAL GAUGE

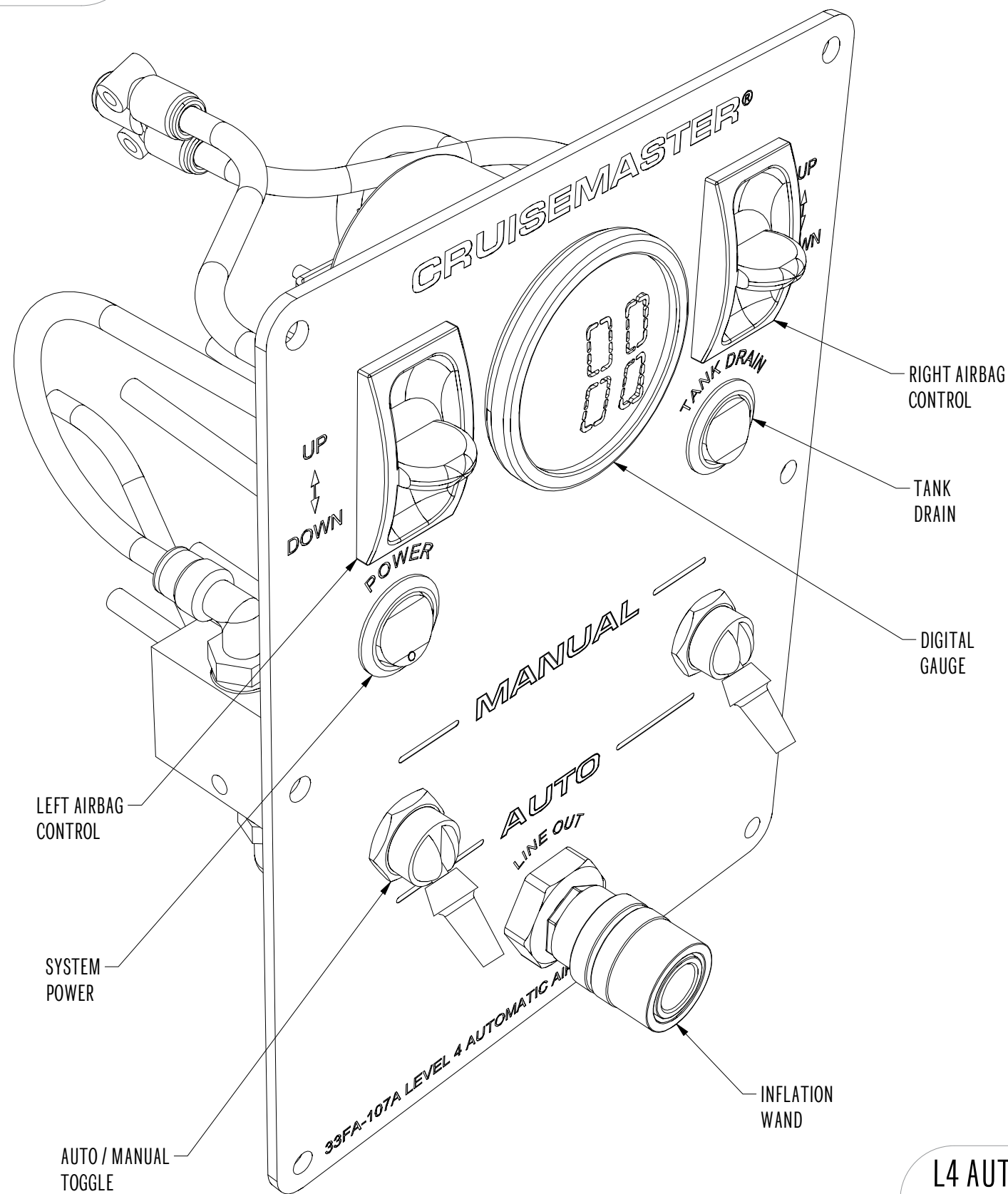
ELECTRONIC TANK DRAIN

TYRE INFLATION PORT

200 PSI COMPRESSOR

11L TANK

AUTO LEVELING



DESIGNED TO BE USED WITH	
CM XT	CM ATX
33SA-AIRKIT-1AS	33SA-AIRKIT-1BS
33SA-AIRKIT-1AT	33SA-AITKIT-1BT

L4 AUTOMATIC CONTROL PANEL PART LIST			
ITEM	QTY	PART NUMBER	DESCRIPTION
1	1	AC7200D	DUAL DIGITAL GAUGE WITH ABM LOGO
2	1	B2520	33FA-107A LEVEL 4 AIR CONTROL PANEL
3	0.28	EF3BR	3MM ELECTRICAL CABLE - BROWN
4	5	EF3T	3MM TWIN CORE ELECTRICAL CABLE
5	0.525	EF3W	3MM ELECTRICAL CABLE - WHITE
6	0.47	EF5B	5MM ELECTRICAL CABLE - BLACK
7	0.82	EF6R	6MM ELECTRICAL CABLE - RED
8	1	EFR40	40 AMP RELAY - 12 VOLT, 4 PIN
9	1	EFSF48	FEMALE SPADE TERMINAL - 4MM BLUE (4.8MM WIDTH)
10	3	EFSF8R	FEMALE SPADE TERMINAL - 2.5 TO 3MM RED (6.3MM WIDTH)
11	4	EFSF48	FEMALE SPADE TERMINAL - 3MM RED (4.8MM WIDTH)
12	3	EFSFY	FEMALE SPADE TERMINAL - 5 TO 6MM YELLOW (6.3MM WIDTH)
13	1	ES1000	ROCKER SWITCH - ON-OFF-ON
14	1	ES1200	ROCKER SWITCH - 12V WITH LED OFF-ON
15	2	FAC7100	PNEUMATIC PADDLE SWITCH BARBED
16	1	FAC7305	COMPRESSOR TEE FITTING 1/4 NPT
17	1	FAC7401	QUICK RELEASE COUPLING - AC7401A
18	1	FAC7405	110/150 PSI PRESSURE SWITCH 1/8 NPT
19	1	FN1104-140	NYLON TUBE 1/4 140MM - BLACK
20	4	FN1104-240	NYLON TUBE 1/4 240MM - BLACK
21	2	FN1104-45	NYLON TUBE 1/4 45MM - BLACK
22	2	FN1104-55	NYLON TUBE 1/4 55MM - BLACK
23	3	FN1104-75	NYLON TUBE 1/4 75MM - BLACK
24	1	FAC7420	BULKHEAD CONNECTOR 1/4 X 1/4 NPT
25	4	FQF1503P	Y PIECE 1/4 PTC - SMC
26	1	FQF305	STRAIGHT FITTING 1/4 PTC X 1/4 - CAMOZZI
27	6	FQF504	ELBOW FITTING 1/4 PTC X 1/8 - CAMOZZI
28	2	V338990	TOGGLE VALVE
29	1	YABM1	SMALL ABM CARTON - BROWN 250X250X310

REV	DESCRIPTION	ECN	NAME	DATE
5	Steel air tank swapped to aluminium	1803	JT	21/01/2020
4	Updated XT installation to G6, updated schematic for condensation	1730	AB	24/01/2019
3	Added control system part list, added 10m roll air line	1556	AJ	18/01/2017
2	Added auto adjuster valves ATX and XT	1548	AJ	22/09/2016
1	Release for production	1497	AJ	9/07/2016

## L4 AUTOMATIC CONTROL PANEL

33FA-107A

PART NUMBER

MATERIAL:

FINISH:

ALL DIMENSIONS IN MILLIMETERS UNLESS OTHERWISE STATED

DO NOT SCALE

SUPPLIER CODE:

MASS: 0.895 kg

VOLUME: 435763.3 mm<sup>3</sup>

PAGE: 1 of 5

SHEET SIZE: A3

DRAWN: AB  
CHECKED: DVD  
APPROVED: ACG  
DATE: 28/11/2018

TITLE

UNLESS OTHERWISE STATED

DIM ± 0.5

0.0 ± 0.2

0.00 ± 0.05

MACHINED 3.2

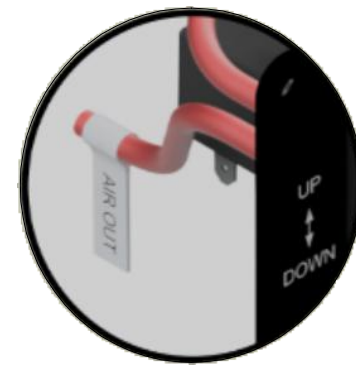
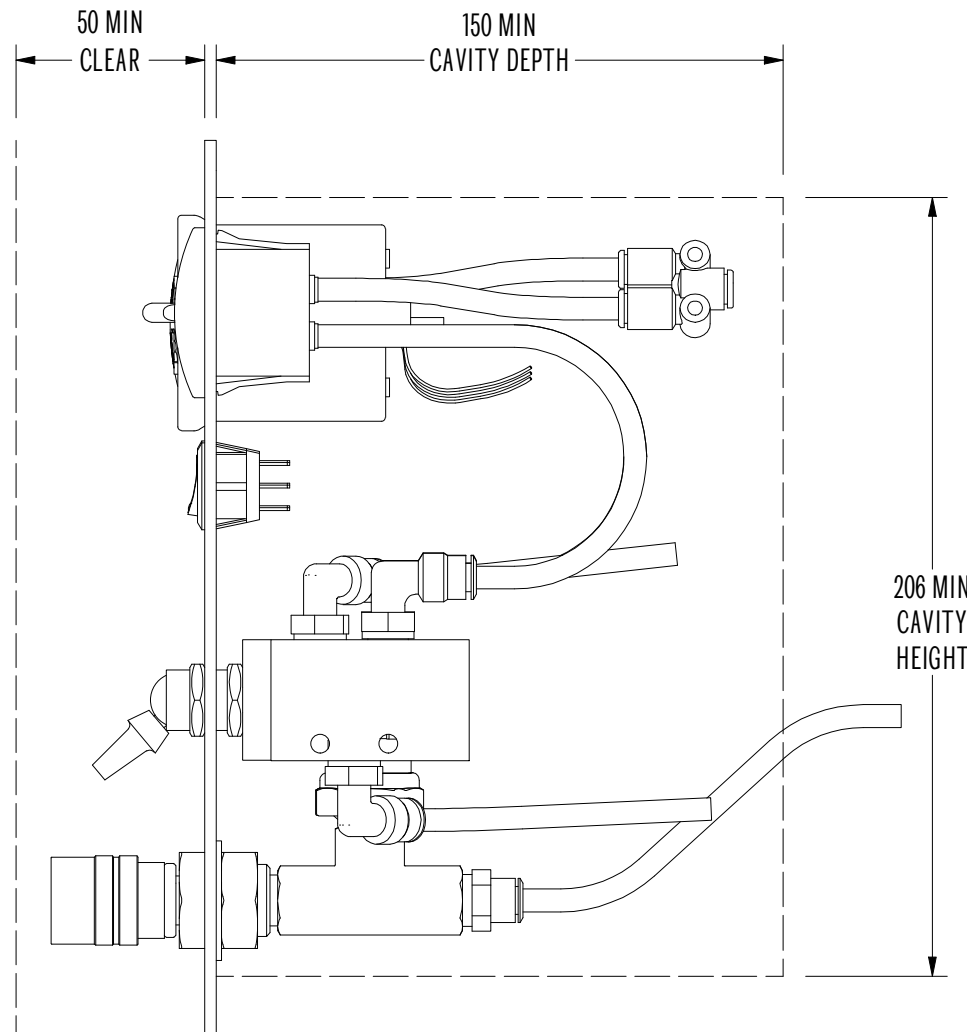
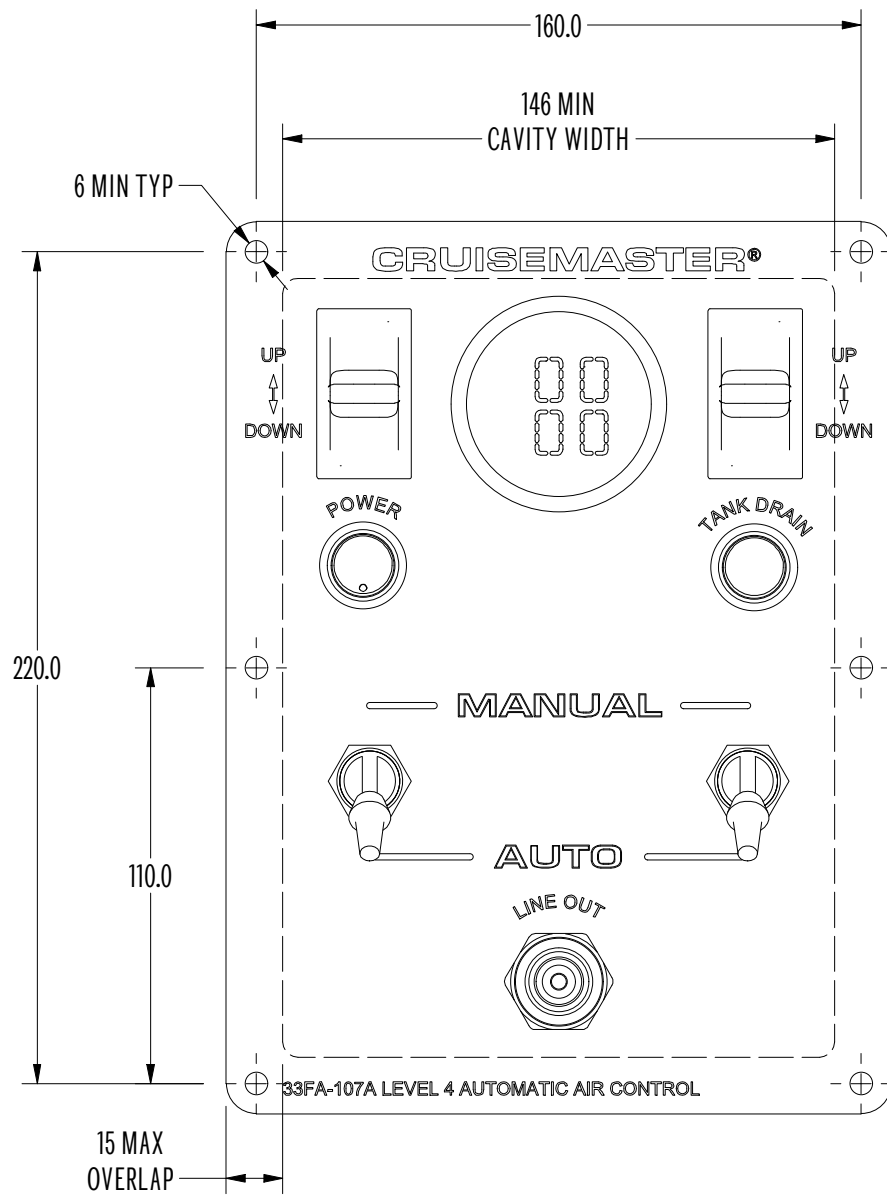
GEN SHORE HARDNESS TOL ± 3

REMOVE SHARP EDGES





# CONTROL SYSTEM



FOLLOW LINE LABELING TO CONNECT THE AIR LINES AND ELECTRICAL WIRING CORRECTLY

## GENERAL INSTRUCTIONS

- It is recommended that only a properly qualified person installs the product and carries out maintenance. If you are not qualified and attempt to carry out such work ensure that all safety equipment is used and safety standards are met.
- Ensure that you have read the full Product Manual before attempting to fit the product.
- Ensure the Product Manual is kept with the vehicle and that any vehicle owner and/or operator are fully advised on the system and its operation before attempting to operate it.
- DO NOT connect any electrical components to the vehicle without preparing the electrical system as per the vehicle manufacturer's instructions. Connecting without preparing the vehicle could lead to component failure, vehicle damage or fire.
- If you use a sharp utility knife or razor blade great care must be taken in all cases not to cut yourself during this operation.
- The gauge is NOT weatherproof and is best mounted inside the vehicle.
- The switches should be mounted in a protected area to minimize the effect of moisture and dirt E.g. in or under a tray, in tool box or canopy.
- Air compressors get hot - avoid any flammable liquid or burn risk areas.
- The air tank is rated to a maximum working pressure of 150 psi (10 bar) and this is never to be exceeded.
- Incorrect use of this product can result in damage to the components associated parts and/or the vehicle, which is not covered under warranty.
- Ensure suspension airbags are maintained at the stated ride height at all times and maintain the minimum pressure required and never exceed the maximum, as required by the particular airbag product.

### L4 AUTOMATIC CONTROL PANEL

33FA-107A

TITLE

PART NUMBER

MATERIAL:

FINISH:

ALL DIMENSIONS IN MILLIMETERS UNLESS OTHERWISE STATED

DO NOT SCALE  
SUPPLIER CODE:

MASS: 0.895 kg  
VOLUME: 435763.3 mm<sup>3</sup>

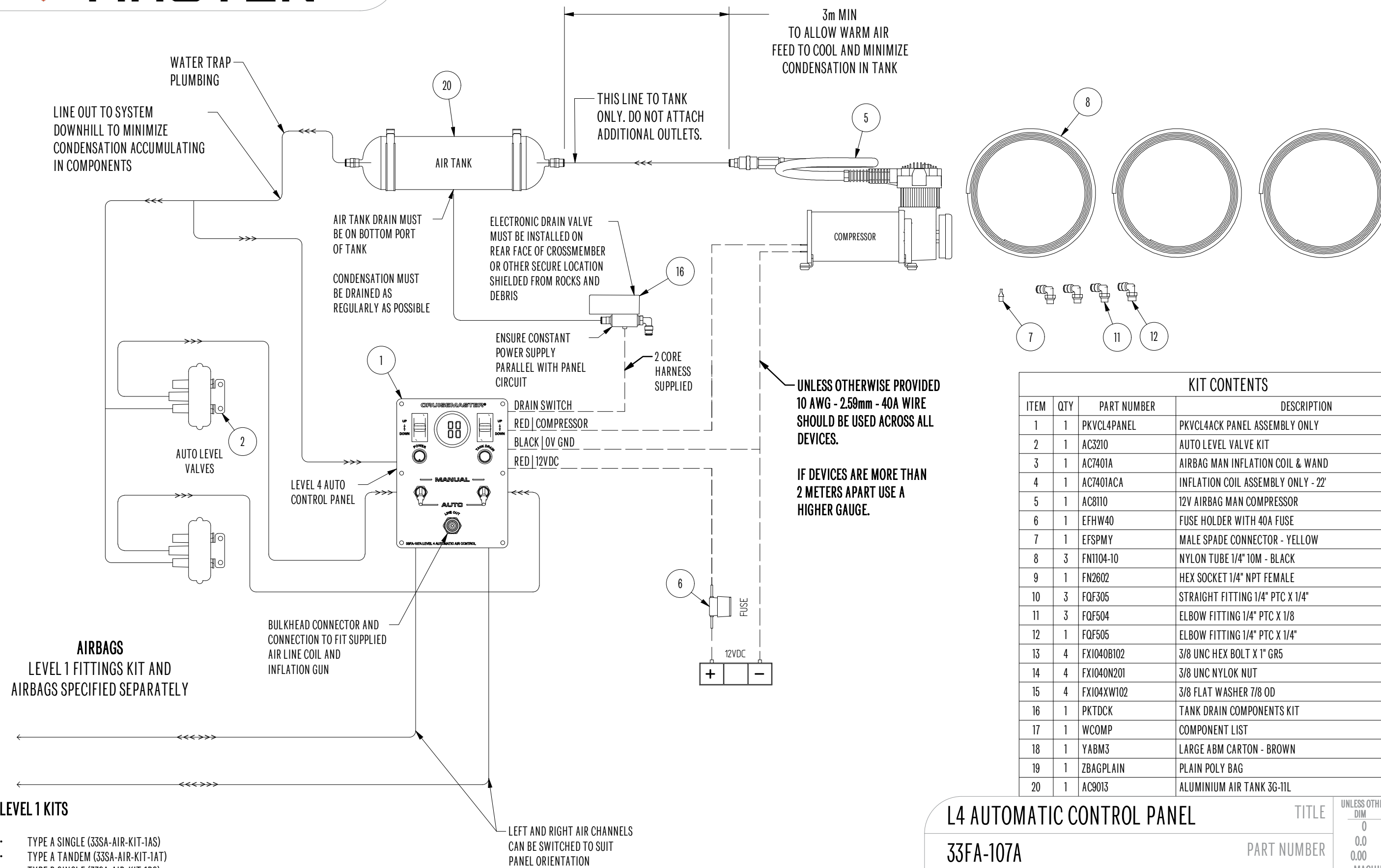
PAGE: 2 of 5  
SHEET SIZE: A3

DRAWN: AB  
CHECKED: DVD  
APPROVED: ACG  
DATE: 28/11/2018

UNLESS OTHERWISE STATED	
DIM	TOL
0	± 0.5
0.0	± 0.2
0.00	± 0.05
MACHINED	3.2/
GEN SHORE HARDNESS TOL ± 3	
REMOVE SHARP EDGES	



# SYSTEM SCHEMATIC



## LEVEL 1 KITS

- TYPE A SINGLE (33SA-AIR-KIT-1AS)
- TYPE A TANDEM (33SA-AIR-KIT-1AT)
- TYPE B SINGLE (33SA-AIR-KIT-1BS)
- TYPE B TANDEM (33SA-AIR-KIT-1BT)

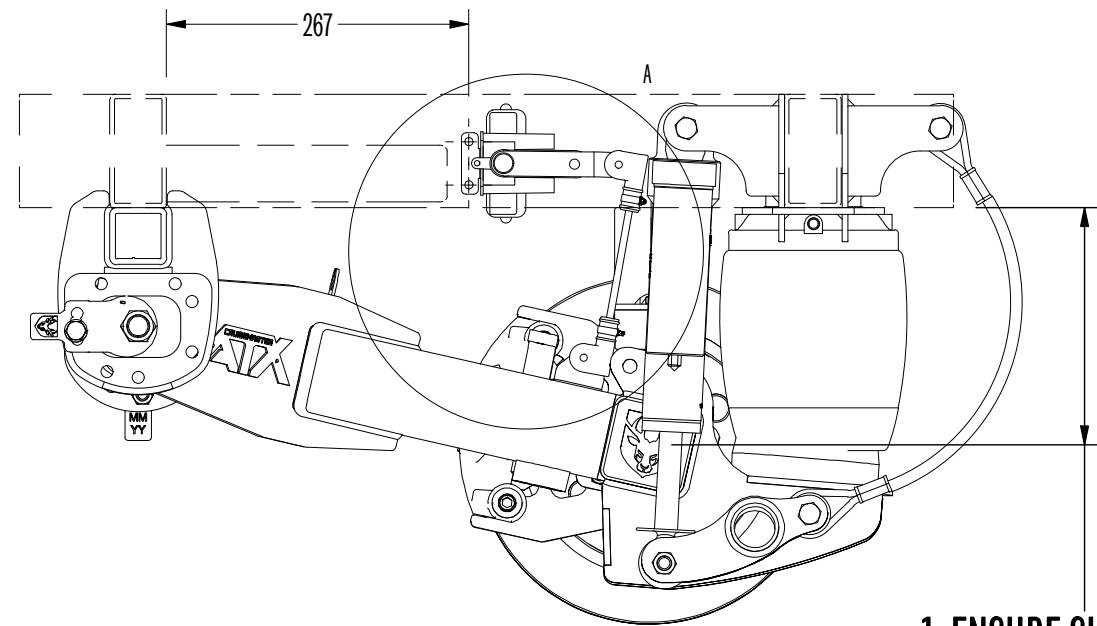
## L4 AUTOMATIC CONTROL PANEL

33FA-107A		TITLE
MATERIAL:		FINISH:
ALL DIMENSIONS IN MILLIMETERS UNLESS OTHERWISE STATED		DRAWN: AB
DO NOT SCALE	MASS: N/A	CHECKED: DVD
SUPPLIER CODE:	VOLUME: N/A	APPROVED: ACG
	PAGE: 3 of 5	DATE: 28/11/2018
	SHEET SIZE: A3	

UNLESS OTHERWISE STATED	DIM	TOL
	0	± 0.5
	0.0	± 0.2
	0.00	± 0.05
	MACHINED	3.2
GEN SHORE HARDNESS TOL ± 3		
REMOVE SHARP EDGES		

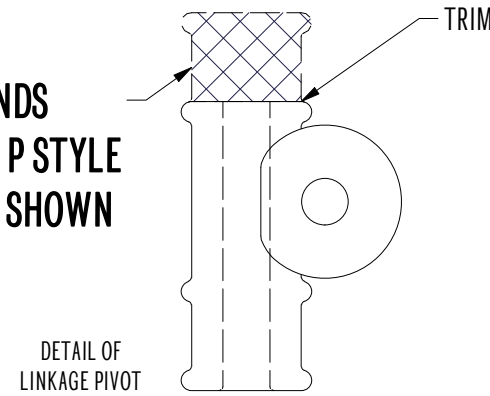


# ATX LEVEL 4 CONTROL ARM INSTALLATION INSTRUCTIONS



**1. ENSURE SUSPENSION IS AT CORRECT RIDE HEIGHT**

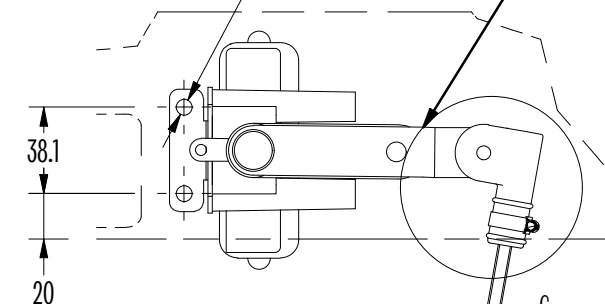
**2. FOR ROD ENDS OTHER THAN P STYLE TRIM END AS SHOWN**



DETAIL OF LINKAGE PIVOT

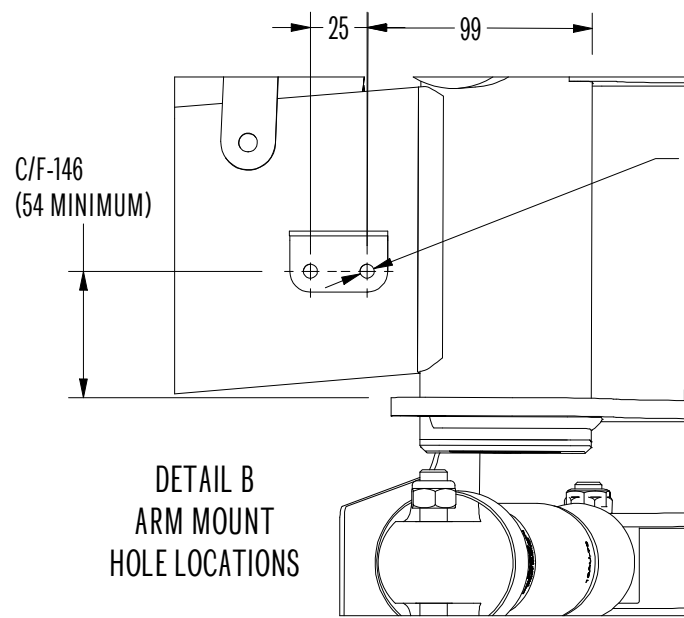
Ø6.0 TYP  
DRILL AND TAP AS REQUIRED TO SUIT  
IF USING SELF TAPPING METAL SCREWS ENSURE  
8G (4.2mm) x 16mm LONG MINIMUM

**3. INSTALL LEVEL VALVES AS SHOWN WITH SUSPENSION AT RIDE HEIGHT AND SET VALVE LEVERS TO HORIZONTAL**



DETAIL A  
AUTO ADJUSTER  
HOLE LOCATIONS

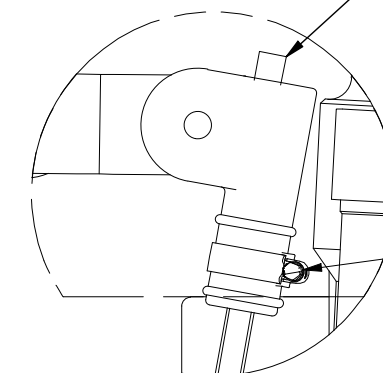
AUTO ADJUSTER LOCATION



DETAIL B  
ARM MOUNT  
HOLE LOCATIONS

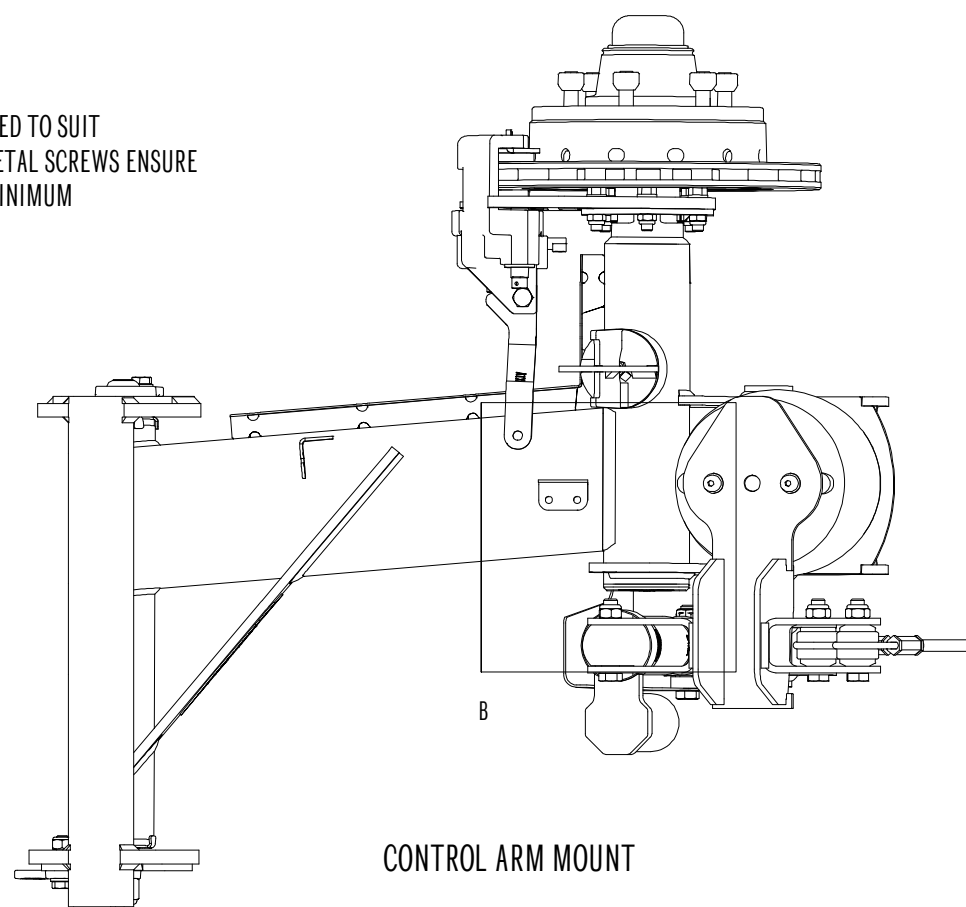
Ø6.2  
DRILL AND TAP AS REQUIRED TO SUIT  
IF USING SELF TAPPING METAL SCREWS ENSURE  
8G (4.2mm) x 16mm LONG MINIMUM

**4. TRIM EXCESS ROD LENGTH FLUSH WITH END FACE**



DETAIL C

**5. ENSURE CLAMPS ARE ORIENTED TO CLEAR BRAKE/AIR LINES**



CONTROL ARM MOUNT

**WARNING**

IF CHASSIS TO FACE EXCEEDS 200 AND ANTI ROLL BAR IS INSTALLED MOUNTING INSTRUCTIONS ARE NOT APPLICABLE. A NEW MOUNTING LOCATION MUST BE USED THAT DOESN'T HAVE ANY INTERFERENCE WITH THE FOLLOWING.

- ANTI-ROLL BAR
- CHASSIS
- VALVE TRAVEL LENGTH
- FLOOR OF THE CARAVAN OR TRAILER

**NOTE**

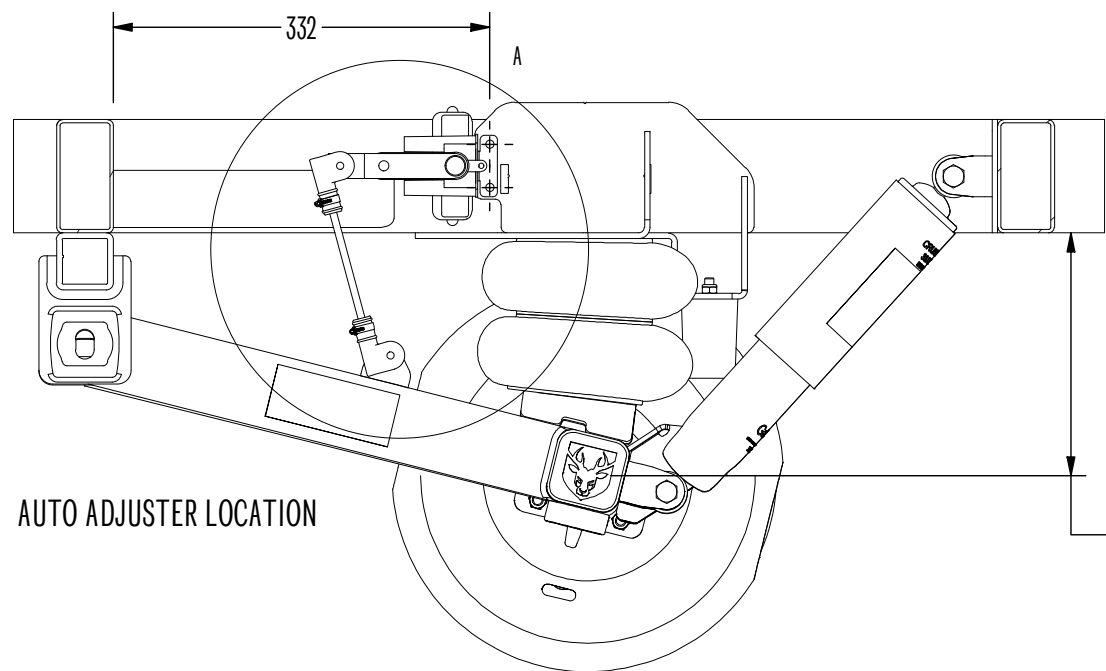
ORIENTATION OF MOUNTING BRACKET AND CONTROL LEVER MAY VARY DUE TO CASSIS TO FACE AND THE LOCATION OF CHASSIS BRACING.

L4 AUTOMATIC CONTROL PANEL	TITLE
33FA-107A	DRAWING NUMBER

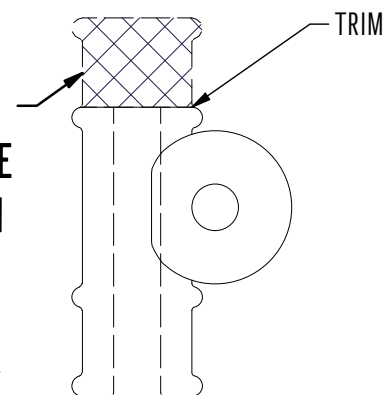
ALL DIMENSIONS IN MILLIMETERS UNLESS OTHERWISE STATED	DO NOT SCALE
P: (07) 3624 3800	DATE: 28/11/2018
W: CRUISEMASTER.COM.AU	REV: 5
E: SALES@CRUISEMASTER.COM.AU	SHEET SIZE: A3
A: 352B BILSEN ROAD, GEEBUNG, QLD 4034	PAGE: 4 of 5



# XT LEVEL 4 CONTROL ARM INSTALLATION INSTRUCTIONS FOR 150mm CHASSIS

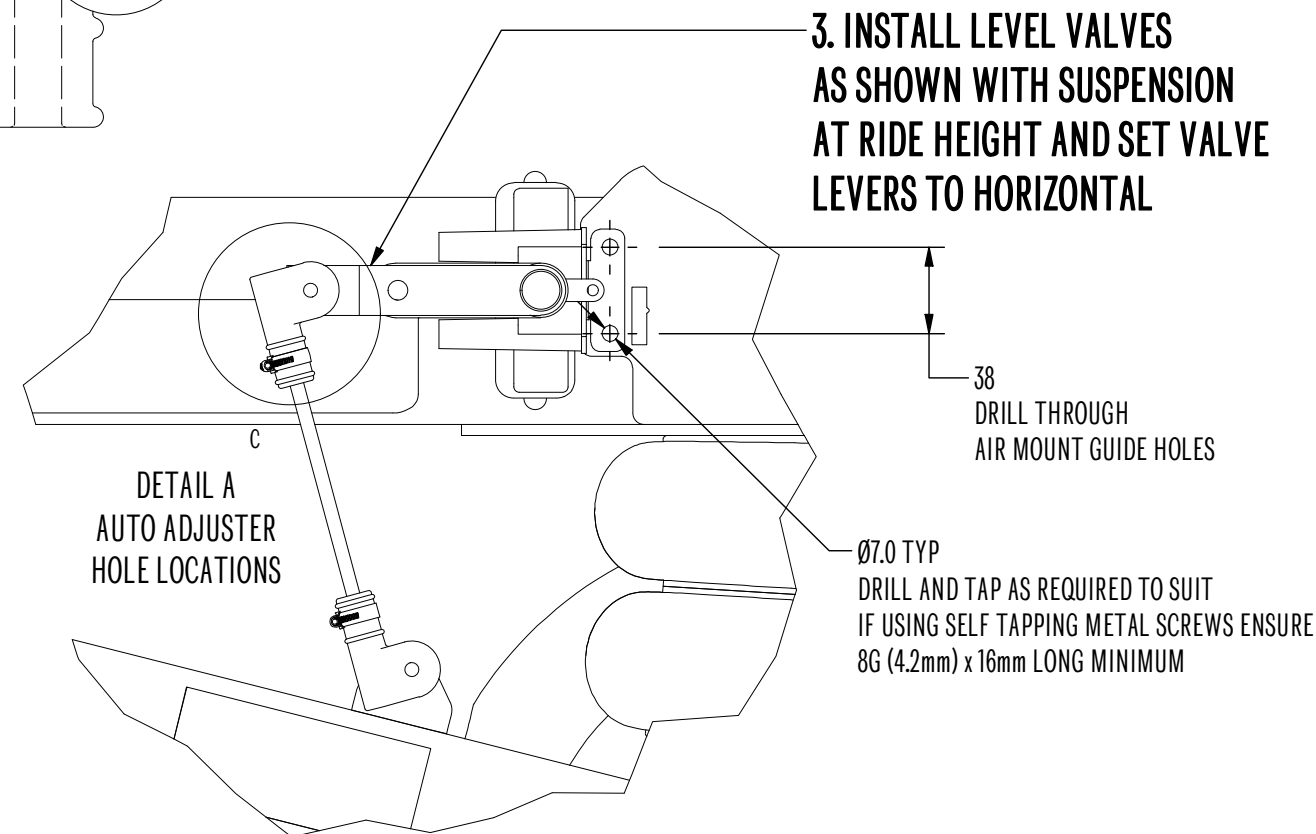


2. FOR ROD ENDS  
OTHER THAN P STYLE  
TRIM END AS SHOWN



DETAIL OF  
LINKAGE PIVOT

1. ENSURE SUSPENSION  
IS AT CORRECT  
RIDE HEIGHT

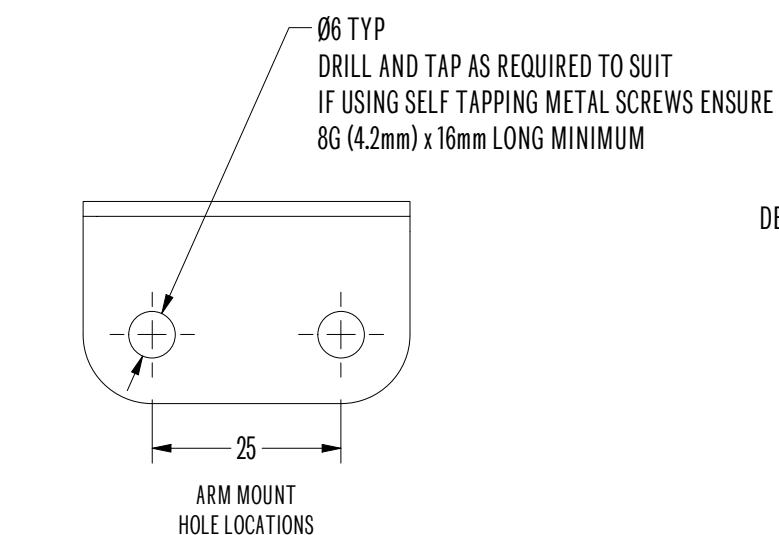


3. INSTALL LEVEL VALVES  
AS SHOWN WITH SUSPENSION  
AT RIDE HEIGHT AND SET VALVE  
LEVERS TO HORIZONTAL

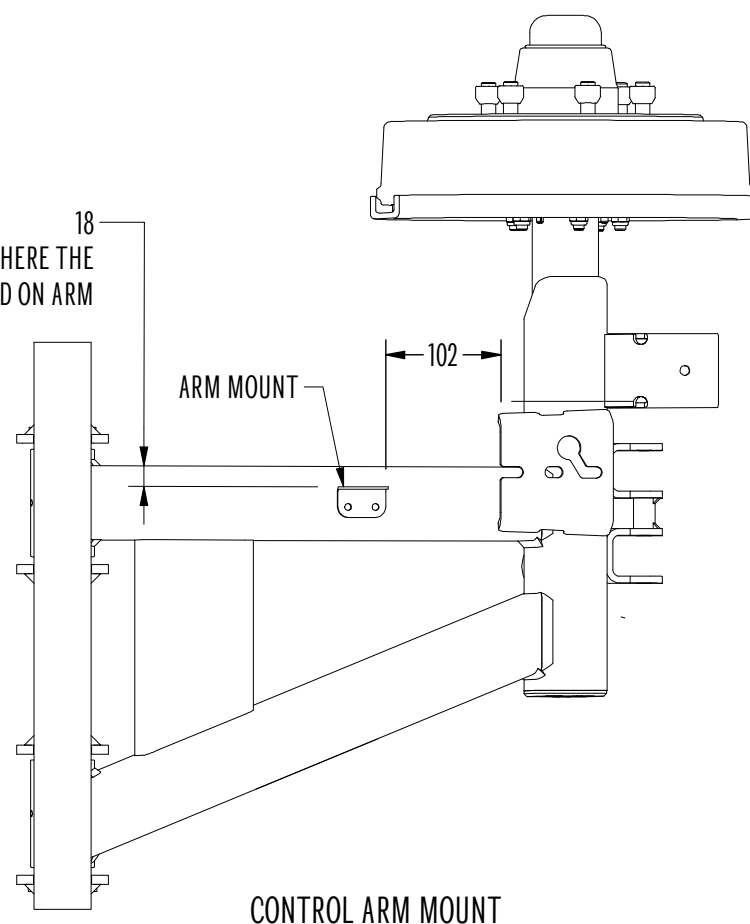
38  
DRILL THROUGH  
AIR MOUNT  
GUIDE HOLES

DETAIL A  
AUTO ADJUSTER  
HOLE LOCATIONS

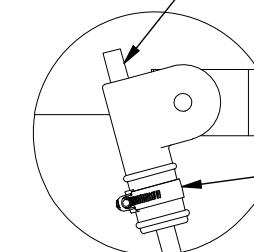
Ø7.0 TYP  
DRILL AND TAP AS REQUIRED TO SUIT  
IF USING SELF TAPPING METAL SCREWS ENSURE  
8G (4.2mm) x 16mm LONG MINIMUM



18  
DEPENDING ON WHERE THE  
ROD IS LOCATED ON ARM



4. TRIM EXCESS  
ROD LENGTH FLUSH  
WITH END FACE



DETAIL C

5. ENSURE CLAMPS  
ARE ORIENTED TO  
CLEAR BRAKE/AIR  
LINES

**NOTE**

ORIENTATION OF MOUNTING BRACKET AND CONTROL LEVER MAY VARY  
DUE TO CHASSIS TO FACE AND THE LOCATION OF CHASSIS BRACING.

L4 AUTOMATIC CONTROL PANEL

TITLE

33FA-107A

DRAWING NUMBER

ALL DIMENSIONS IN MILLIMETERS UNLESS OTHERWISE STATED

DO NOT SCALE

P: (07) 3624 3800

DATE: 28/11/2018

W: CRUISEMASTER.COM.AU

REV: 5

E: SALES@CRUISEMASTER.COM.AU

SHEET SIZE: A3

A: 352B BILSEN ROAD, GEEBUNG, QLD 4034

PAGE: 5 of 5